

HALSTEAD TOWN PLAN 2019





Halstead Town Council

Queens Hall, Chipping Hill, Halstead, Essex, CO9 2BY

Telephone : 01787 476480

Website : halsteadtowncouncil.org.uk

Email : townclerk@halsteadtowncouncil.org.uk

Follow us on Facebook : Search 'Halstead Town Council' or click the Facebook logo on our website



Contents

Introduction	04
Brief history of Halstead	05
Present day Halstead	06
Halstead Town Council	07
Survey of residents	08
Features of Halstead that residents enjoy	09
Features of Halstead that residents would improve	10
Subjects for consideration	12
■ Transport and highways	12
■ Housing and development	13
■ Local community services	14, 15
■ Environment, conservation and heritage	16
■ Leisure and recreation	17
■ Education and young people	18
■ Local economy and tourism	19
■ Keeping people informed	20
Action plans	21, 22
Acknowledgements	23



Introduction

In 2001 Halstead conducted a survey to gather data and explore the views residents themselves held regarding the direction of the town. A report based on the results entitled 'Ideal Futures for Halstead' was subsequently published.

The Town Council passed a resolution to create a new "Town Plan" that takes into account the concerns and aspirations of residents for the future of the Town. To help create this plan it was decided to conduct a new survey across a range of subjects to understand the views and opinions of residents. The results of this survey will be used to steer future policies and actions to improve the town.

Fifteen years later, a questionnaire containing 76 householder questions and 15 youth questions specifically for 11 to 18-year-olds was hand-delivered to over 6,000 households in Halstead. In total, 993 Householder and 101 Youth questionnaires were completed and returned.

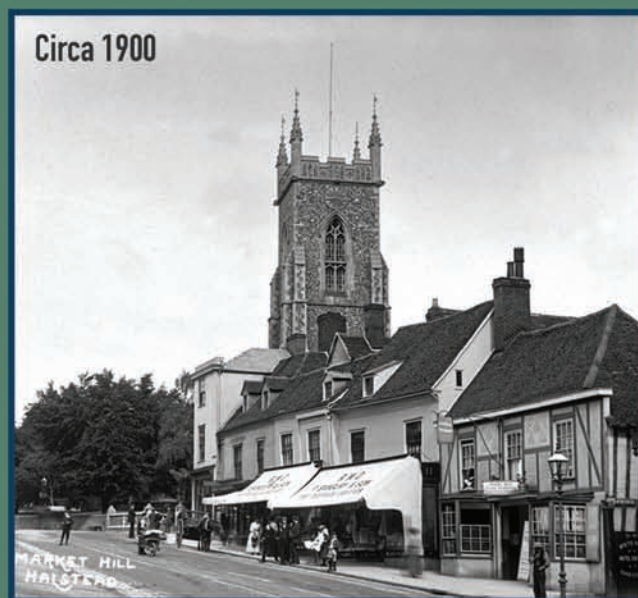
Halstead Town Council would sincerely like to thank those people who took the time to complete and return the questionnaires and for their wide range of comments.

This brochure is a summary of the main conclusions reached by Councillors on the basis of recommendations, which gained support within the survey. These will be used as a basis for an ongoing Action Plan for improvements in the town



Brief history of the Essex town of Halstead

Halstead derives its name from the Old English word "heald" meaning a sloping hillside and "stede" a place of shelter. Archaeological evidence indicates that Halstead has been occupied since the early Bronze Age. The sites of Iron Age and Roman settlements, including a villa, were discovered in the vicinity of Greenstead Hall, where Saxon pottery was also found. The Domesday Book of 1086 records the landowners of Halstead and its three water mills along the River Colne. There is evidence of a market in Halstead before 1251 when a Royal Charter was granted for a weekly market and an annual fair. Further grants were made in 1330 and 1467 for the market which was then held in Chipping Hill. St. Andrews Church was in existence by 1276 and the Town developed around the Church and nearby market. In about 1413 Holy Trinity Chapel was erected near the junction of the present Chapel Hill with Trinity Street and Mount Hill. This chapel disappeared by the eighteenth century and during 1843 it was replaced by Holy Trinity Church, a Gothic Revival building. In addition Halstead had a number of non-conformist Chapels, of which a few survive. The Town had two principal manors namely Abels and Bois Hall. The manor houses together with the Guildhall were all demolished during the twentieth century.



The Old Grammar School in the High Street was founded in 1594 and closed in 1906. The Workhouse for Halstead Union was built in 1838 and demolished in 1922. One of the main sources of employment in the town was weaving, initially of cloth and latterly silk and crepe. The Courtauld silk weaving mill was the major employer in the town until its closure in 1982. Other large employers included Charles Portway & Son Limited and The Tortoise Foundry Co. Limited, which made the well known tortoise stoves. There were two major breweries namely T. F. Adams & Sons and G. E. Cook & sons. Henry Cocksedge & Son were timber merchants and wood turners who also operated steam saw mills. These and other industries used the Colne Valley and Halstead Railway from 1860 until 1965. A number of fine buildings remain in the town such as the former Corn Exchange built 1864-65 now the library. They also include the Cottage Hospital opened 1884, the Townsford mill and many old buildings which adorn the High Street. The industrial housing built by members of the Courtauld family during the nineteenth and twentieth centuries is particularly attractive as are the public gardens opened in 1901. This historic market town still continues to expand well beyond its original centre round the steep High Street between the River Colne and St. Andrews Church.



Present day Halstead

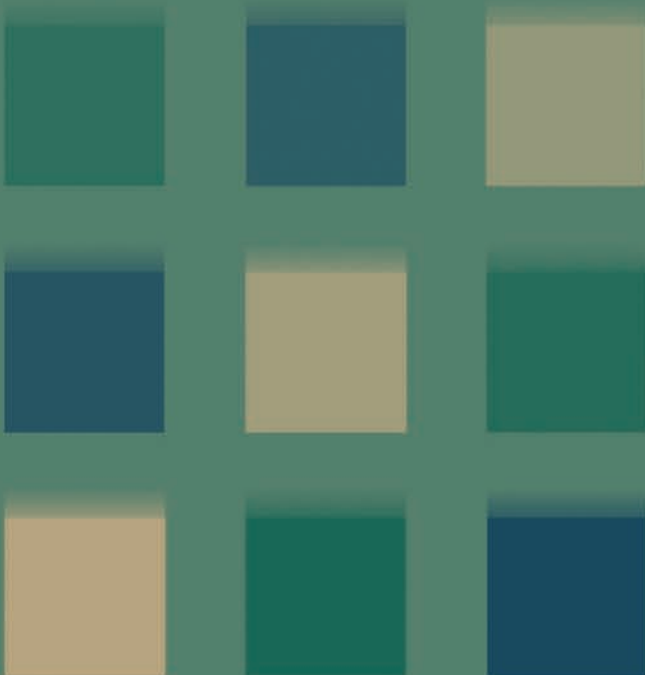
Halstead is an award winning Floral Market Town with a traditional High Street of historic buildings and crossed at the lower end by a bridge over the River Colne. It is home to over 12,000 residents, as well as several local businesses operating within the town and its surrounding industrial estates.

Halstead is a great place to live with its main strengths of countryside character and friendly people, attracting visitors and newcomers from far and wide. The Town has a wide range of local organisations which provide interest and enjoyment to so many residents. In particular, the Halstead In Bloom team has raised the profile of the Town with its success in achieving many national awards, and its resplendent seasonal displays.

People gave practical reasons for moving to Halstead, such as family, house prices and employment, but it is worth noting that the character of the town was also a strong reason.



Like many other towns, Halstead is suffering the effects of modern day living with increased levels of traffic flow through the town and a decline in the number and range of retail outlets in the town centre. In recent years the population has increased steadily and is set to accelerate further. Approval has been granted to build a significant number of new houses in and around the town. This will continue to put a strain on local services and the Town infrastructure.



In this Town Plan the council seeks to preserve and build upon the strengths of the Town, and at the same time address areas of concern for people here.

Halstead Town Council

Halstead Town Council consists of a group of twelve elected councillors and a team of eleven members of staff, many of whom are part-time, who manage the day-to-day activities. Councillors are elected for a term of four years and do not receive any remuneration for their work.

Main Functions and Responsibilities of Halstead Town Council

Car Parks Owns and manages Chapel Street, Butler Road, Rosemary Lane and Hedingham Road car parks	Queens Hall Owns and manages the hiring of Queens Hall to individuals, organisations and businesses	Courtaulds Sports Ground Owns this ground with management by Courtaulds Sports Ground Management Committee
Closed Churchyards Responsible for the maintenance of St Andrews and Holy Trinity churchyards	Allotments Leases six allotment sites in the town from Braintree District Council and rents plots to local residents	Library Owns Library building and leases to Essex County Council which runs the service
Empire Theatre Owns and leases the Theatre to the Empire Trust who run the theatre	Christmas Lights Owns and erects the Christmas lights in the town	Events and Activities Runs coach outings and Christmas parties for senior citizens, torchlight procession, events in Public gardens, Easter egg hunt and summer fun for children
Planning Is a consultee to Braintree District Council for planning applications	Public Toilets Manages the running and maintenance of the Kings Road public toilets	Grants Provides grants to local organisations

Other Organisations

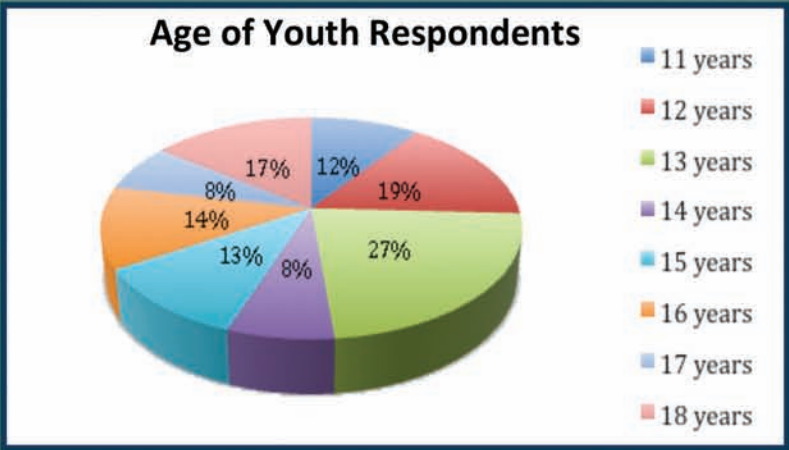
There are many other organisations responsible for delivering services to the town. This is a summary of some of the key areas:

Braintree District Council Planning Building control Refuse and recycling collection Litter collection Parks maintenance Council tax collection Open cemetery Environmental health Community transport	Essex County Council Transport & roads including: - Street lighting - Pavements - Road signage Education and schools Library service Social care	Other Essex Police Essex Fire & Rescue Service Essex Parking Partnership including: - on street parking - permits and controls - parking wardens - parking restrictions
--	--	---

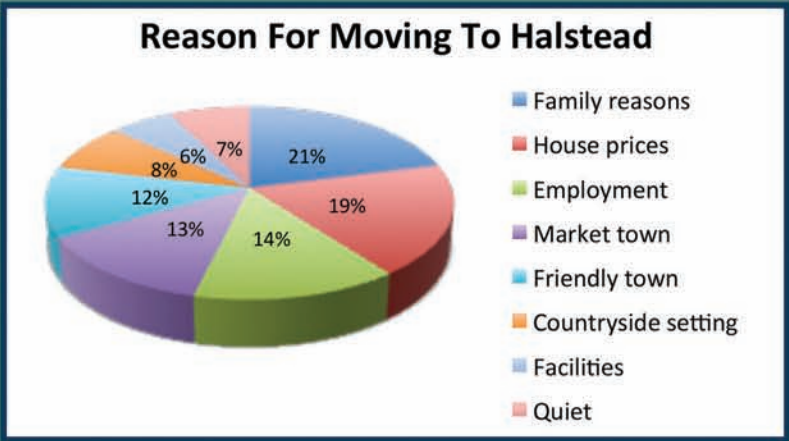
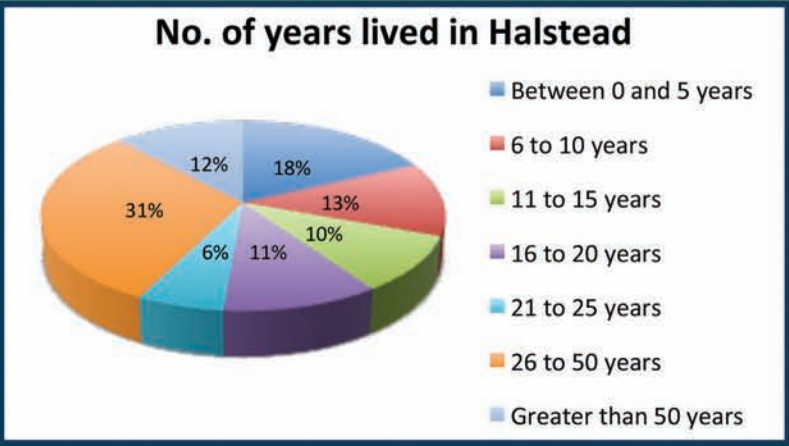
Survey of residents

The questionnaire posed 76 general questions to households and 15 questions specific to young people aged 11 to 18, across a range of subjects about life and experience in the Town. It was extremely pleasing to receive responses from a wide range of residents across all age groups. The pie charts below reflect the diversity of responses received.

101 young people responded, spanning the whole range of teenage years.



993 households responded, answering the general questions, and represented a range of different groups who have lived in the town for different lengths of time.



Features of Halstead that residents enjoy

The top five features and residents' comments were:



1. The friendliness of the people and the community spirit

"Lovely people"

"Most people are helpful and friendly"



2. The small market town character and the architecture of the buildings and High Street setting.

"I love the High Street setting"

"Most things are within walking distance of home"



3. Halstead in Bloom and floral displays

"Nice flower displays throughout the town"

"Look pretty especially with all the flowers and old buildings"



4. Countryside and rural setting

"Lots of choice of walks/countryside"

"Town is close to the countryside"



5. Town parks

"The Public Gardens are always well maintained"

"There are lots of parks in the town, mostly with good facilities"

Features of Halstead residents would improve

The top five features and residents' comments were:



1. More shops and a greater variety of shops

"Not enough clothes/home shops, too many charity shops"

"We need more large chain shops – local shops seem to struggle"



2. Traffic congestion

"Still waiting for bypass after more than 20 years"

"Head Street and Colchester Road junction often blocked"



3. Parking costs

"Free parking to encourage people to use shops"

"Free parking for less than an hour"



4. Medical capacity at the doctor's surgery

"Surgery is heavily over-subscribed"

"It can be difficult to get an appointment"



5. Police presence

"Inadequate policing presence around town"

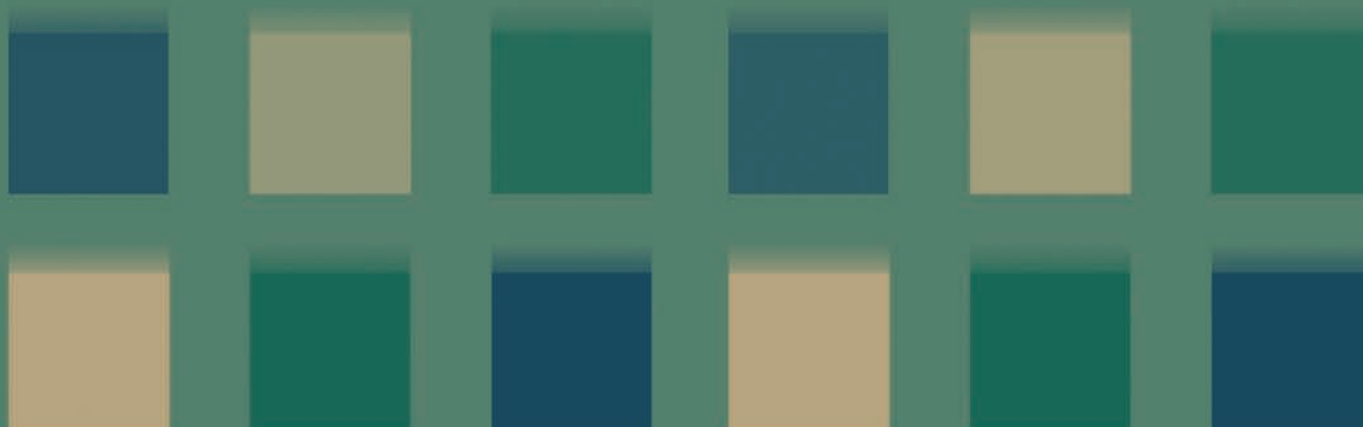
"Halstead seems to have anti-social behaviour problems"

Areas for consideration

The survey asked questions covering the following subject areas. The following pages look at each of these areas, taking into account the results of the survey and including more recent supporting information.

The recommendations for improvements form the basis of the action plan.

- Transport and highways in Halstead
- Housing and development
- Local community services
- Environment, conservation and heritage
- Leisure and recreation
- Education and young people
- Local economy and tourism
- Keeping people informed



Transport and highways in Halstead

Halstead is situated on a busy crossroads and has access routes to major towns on all sides. An ongoing rise in economic and consumer activity is responsible for a greater number of heavy goods vehicles using the roads, and higher levels of congestion. The planned housing developments will inevitably raise the volume of traffic further, initially due to construction vehicles working on the development sites, and of course the number of householders using the roads is bound to increase significantly.

Feedback from the survey

82% of respondents to the survey were concerned by traffic issues in the town, mainly on the through-routes to other towns, but also on routes such as Mallows Field and Tidings Hill at busy times of the day.

Several people pointed out the increase in heavy lorries using our roads particularly at the junction of the High Street, Colchester Road and Head Street.

70% of respondents felt that Halstead's roads are in need of improvement, particularly citing potholes as a major issue. A significant proportion suggested that a reduced speed limit to 20mph would be of real benefit on some side roads.

Considering the feedback regarding lorries on the roads and congestion, it is unsurprising that 67% of people who responded to the survey are in favour of a bypass being built to divert traffic away from the town centre.

Positive points made in the survey were that the majority of people, 63%, feel safe on our roads as cyclists and pedestrians. The majority also thought that there is sufficient town centre parking, and that public transport services are sufficient for the town's needs.

However, residents did identify free car parking as one of the five top improvements that could be made in the town.



Considerations

As the town's population increases in size, the demands placed upon Halstead's roads and transport infrastructure will also increase. It should be ensured that these are maintained to a good standard and improved where possible, so that the town continues to be a safe and efficient place to live.

Whilst the provision of a bypass to circumnavigate the town would relieve traffic congestion, it is quite likely it would result in infilling with further housing development.

Free car parking in the town's car parks has a cost, as the town council runs and receives income from them and loss in income will place pressure on finances, which may increase council tax.

Recommendations

- Residents should be made aware of procedures for reporting highways issues such as potholes and street lighting problems.
- Essex County Council and our local MP should be made aware of residents' desire for a bypass.
- The Council must ensure that current levels of public transport are maintained and developed.

Housing and development

There has been a significant rise in the number of houses in the process of being built or approved for development in the near future. In their plan of December 2017, Braintree District Council forecast the development of 703 dwellings in five years, the majority of which have planning approval.

Housing growth is mainly focused on three major sites:

Land off Oak Road – 283 dwellings

Central Park, Colchester Road – 103 dwellings

Land off Sudbury Road – 203 dwellings

The proportion termed 'other' represents the total of smaller sites of development.

Additionally, further developments both specified within, and omitted from the draft local plan include further speculative applications for planning approval.

The land off Oak Road and part of the land off Sudbury Road developments are not technically within Halstead town but are adjacent to the boundary.

This expansion affects the character of Halstead's landscape and exerts increased pressures upon stretched local services and highways infrastructure.

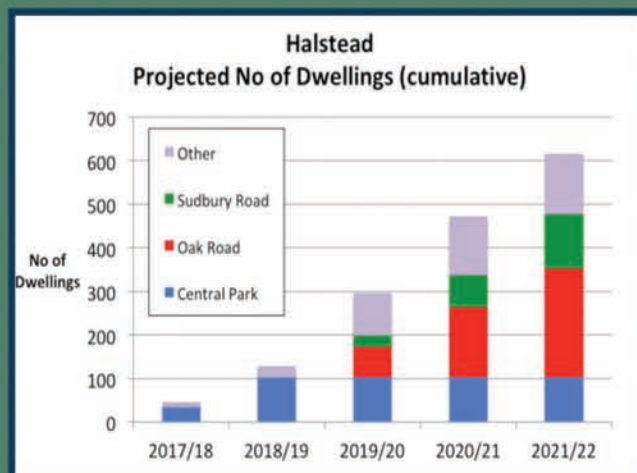
Feedback from residents' survey

The survey was conducted prior to some of the recent planning approvals. Even so, a huge majority – 93% of respondents – felt it is important to limit further developments, and contain them within the town's boundaries.

The survey indicated a strong desire among residents to encourage the redevelopment of existing buildings and brownfield sites within Halstead, and to conserve the town's character.

Considerations

The growth already planned and approved represents a significant challenge to the infrastructure of the Town. The residents and businesses require help and support from the relevant organisations to ensure Halstead's infrastructure is improved sufficiently to cope with the housing growth.



Recommendations

- Further developments should be limited and phased-in over a longer time period to allow time for the infrastructure to be strengthened.
- The town boundary should be extended to include areas of land off Oak Road and part of the Sudbury Road developments.
- Priority should be given to the use of brown field sites and redevelopment of existing buildings within the town.
- Care should be taken to maintain the character of the town and preserve its heritage.
- Measures should be put in place to ensure that sufficient health, education and highways capacity is there to cater for the population increase.



Local community services

Police services

Alterations in the level and style of policing in Halstead over recent years are mainly driven by national and regional policy, the changing nature of crime, and financial constraints.

A local police station and visibility of police officers walking the streets – ‘bobbies on the beat’ – are becoming less familiar in smaller towns. The police station in Halstead was closed in 2016, and the community policing team instead operates from a base in Braintree.

Several respondents in the survey relayed concerns about the police station’s closure and lack of police presence in the town, once thought to be deterrents to low-level crime and anti-social behaviour. These types of crimes are seen to have become more prevalent in recent years, fuelling the call for measures to protect residents.

Considerations

Despite concerns over low-level crime and anti-social behaviour, the survey indicated a feeling of general safety in Halstead for 69% of residents.

Recommendations

- Relay the concerns of Halstead residents to the community policing team, and seek ways of improving the visibility of policing.
- Evaluate Essex Police’s initiative for the provision of locally funded ‘Special’ Police Officers.



Medical and clinical services

Medical services in Halstead are primarily accessed through Elizabeth Courtauld Surgery, and complemented by services available from Halstead Hospital.

The surgery offers a high quality of medical and clinical service. However, the survey indicated that the surgery’s capacity for treating patients is insufficient. Several respondents expressed dissatisfaction with the procedures for making appointments, and noted a shortage of doctors available to meet their needs.

Considerations

Recent and imminent housing developments put more strain on local services such as the surgery, and it is felt the medical service has failed to keep pace with a rising population, leading to concerns about the ability of the surgery to cater for needs in the future.

Recommendations

- Town councillors to liaise with the surgery team to discuss which measures may be taken to increase the service’s capacity.



Community centre

There is currently a scheme managed by Halstead Community Centre Charitable Company, whose objective is to create a purpose-built community centre in Butler Road. The charity was set up in 2013 to design a proposal and seek funding to support the project. The plan is to create a building housing the library, town council offices, museum, community hall and meeting rooms. The design is complete and planning permission has been granted. The council is awaiting the outcome of the trust exploring potential funding sources for the build.

Library

The library service provided by Essex County Council is housed in a building owned by Halstead Town Council. The survey revealed a strong opinion from 89% of residents that the library provides a good service, which is very positive for all age groups in Halstead.

Council tax charges

The survey enquired whether residents would be prepared to pay a higher amount of Council Tax in order to finance local services. 57% of respondents felt disinclined to pay a higher amount, saying Council Tax charges are already sufficient to afford the town's amenities. A significant minority gave a positive response to the idea of higher taxation in the effort to strengthen two services in particular; policing and health.



Other services

Halstead Hospital, which is supported by the League of Friends of Halstead Hospital charity, provides in-patient and rehabilitation services to residents of Halstead. Services users, to whom it is of great assistance, wish Halstead Hospital to be upheld and improved, although around half of survey respondents indicated they were unaware of its existence or several of the services which are on offer. Halstead's much valued Day Centre is the hub of recreational and friendship support to over 60s in Halstead and also visitors from sixteen surrounding villages. The lack of a Citizens Advice centre in Halstead is a concern for residents. This service was transferred to Braintree in 2016.

The Job Centre in Braintree currently caters for Halstead residents, however advisory services are periodically available in Halstead Library. The survey recorded that 61% of residents held the view that jobseeker related services in the town are insufficient and in great need of enhancement.

Around two thirds of residents responded that they felt that the needs of elderly and disabled residents are adequately met, although naturally improvements would be welcome. It was clear from the survey that most respondents are aware there is a museum in Halstead. It is felt greater publicity would raise its profile as one of the town's attractions.

Recommendations

- The possibility of the re-establishment of a Citizens Advice office and Job Centre in Halstead should be investigated.



Environment, conservation and heritage

The 'Housing and Development' section of this plan gives an overview of planned developments in Halstead required by Braintree District Council in order to meet national Government housing objectives. These will affect features of the town such as environmental character, conservation, history and heritage. Concerns have been raised in regard to the volume of additional house-building both inside and outside the town's boundaries.

Feedback from the survey

The survey results gave a general impression that residents of Halstead are worried about the implications of future development for the town, especially the consequences for history, heritage and open spaces. 95% of respondents relayed that they felt heritage is important and should be carefully protected. There were calls for specific Courtauld buildings to be retained, in addition to certain other buildings within and close to the town. Several respondents also highlighted the risk to wildlife habitats as a serious concern.

The effectiveness of street lighting policies, and issues of dog fouling were consistently remarked upon in the survey. Dog fouling is a prevalent problem in some areas of the town. Street lighting coverage is on the whole thought to be adequate, except for particular alleyways and darker parts of Halstead, however it was felt by a lot of residents that streetlights would better serve the public if they were to stay on throughout the night.

Considerations

Planned housing development, already approved, plus the national government's five year plan targets, will challenge the maintenance and preservation of the town's environment, conservation, history and heritage.



Recommendations

It is important to ensure that:

- Planned and future developments are in keeping with the town's character, including amendments to any existing buildings.
- The developments are not detrimental to the environment and conservation of the town.
- All existing infrastructure, which makes up the town's heritage not to be compromised despite national government housing targets.
- Whenever new infrastructure is agreed upon, full archaeological, wildlife and heritage surveys are to be carried out, and any findings or recommendations adhered to - prior to actual development.
- Public pathways, roadways, parks, gardens and open spaces are clean, tidy and free of animal fouling.
- All appropriate bodies are aware of residents' concerns about lighting and safety.



Leisure and recreation

Halstead's recreational space and facilities, located in parks and sports grounds throughout the town, are felt to be sufficient for the town's needs by 79% of people who responded to the survey. However, it should be noted, these facilities will need to cater for a larger number of residents in view of the housing growth in and around Halstead.

The parks and play areas have a good range of play equipment and outdoor gyms. The survey indicated 87% of residents felt open spaces, parks and equipment are well-maintained and cared for.

Ramsey Road playing field is lacking in facilities, and would benefit from an improved skate park, better play equipment and an outdoor gym.

Halstead is considered to be lacking in recreational facilities and play equipment for disabled people.

The town has a substantial number of flourishing clubs and organisations with over forty different groups and clubs for all ages and interests. They include choirs, the U3A, the WI, allotments, bowling clubs, youth organisations, swimming, football, rugby, cricket and several other activities.

The Halstead In Bloom volunteers are winners of regional and national awards for their marvellous displays of flowers, including a Gold Award nine years in a row from Anglia In Bloom. In combination with other organisations, the team encourage involvement of people of all ages.

Halstead is the setting for a number of well-attended special events throughout the year, reinforcing community spirit and attracting visitors from surrounding villages and towns. The May Day event, Music in the Park, Christmas lights switch on, and the Christmas Torchlight events are held in the Public Gardens.

Halstead also stages one of the most well-known marathons in the country, drawing people from far and wide to take part.



Now 100 years old, the Empire Theatre has seen a resurgence in activity, and is successfully run by an enthusiastic and dedicated group of volunteers, who organise theatre groups, live shows, plays, cinema and bingo.

The River Colne, which flows through Halstead, and across the lower end of the high street, is regarded with great affection, although there is concern for its overall condition and outward appearance as affected by the current water levels.

A tranquil area to watch nature's scenery, meet and chat with friends and fellow ramblers, and a popular route to walk the dog, the River Walk is a much-used feature in Halstead, and has recently benefited from enhancements to one of its stretches. Further improvement to the Riverside Walk would be welcomed.

Recommendations

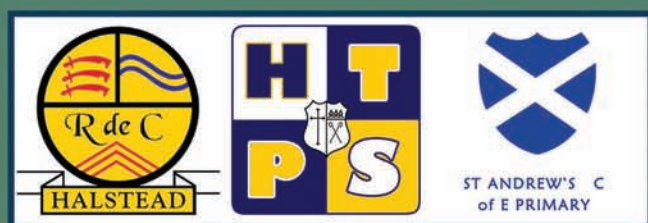
- Improve and increase the recreational facilities at the Ramsey Road playing field
- Add disabled play facilities to town parks and playing fields
- Improve the aesthetic appearance of the River Colne along the Causeway
- Extend the River Walk from the town centre towards the Box Mill area.



Education and young people

Education

Halstead has three primary schools and a secondary academy. The schools are comprised of Holy Trinity C of E Primary School; St. Andrews C of E Primary School; and Richard De Clare Primary School, all three of which are rated "GOOD" by Ofsted. The schools consider their greatest asset the pupils who deserve respect for their dignity and privacy as individuals, and aim to uphold principles of equality and non-discrimination. The children are encouraged to develop caring attitudes towards themselves, each other and the wider community of which they are a part. Lessons are designed to bring out the joy in learning – a natural part of life, and confidence, independence and inquisitiveness are developed in their studies.



Halstead's secondary school, the Ramsey Academy, also rated "GOOD" by Ofsted, is one of the most improved schools nationally. The school aims to be inclusive, outstanding, to belong at the heart of the community and to engage with the local population and organisations. The students are purposefully challenged by education, and produce excellent results. A wide range of opportunities enables students to equip themselves with skills to go on to the next stage of their education and career.



The population increase in Halstead caused by property development places pressure on local services and schools, which are almost full to capacity. It is crucial to raise awareness of this with Essex County Council and for the Government to build new schools or extend existing sites.

Recommendation

- That the Town Council continues to work with ECC and the national government to make education available to all in Halstead.

Activities for young adults

Survey respondents aged 12–18 remarked there is little to do in Halstead. A youth club at the Resource Centre in Parsonage Street once a week, swimming, football clubs, boxing clubs, cricket clubs, cycling clubs, dance studios, choral societies and air cadets are examples of activities which go on, and a bus leaving from Butler Road caters for youth transport. The Young Farmers Association also caters for younger members of Halstead, as do Brownies, Cubs, Guides and Scouts, and various recreation grounds.

Halstead High street and surrounding areas lack venues for young people to meet and chat, or just 'chill out' – such as a community café with rooms for pool, music and dance. Youth volunteers wishing to run such an establishment – open at weekends and a few evenings each week, and run by youth volunteers – could put profits back into the business to upgrade and expand it.

Recommendation

- That the Town Council looks into the possibilities of a youth community café.



Local economy and tourism

Halstead's High street has an attractive and traditional style. With a historic mill at the lower end close to the Colne River and Saint Andrews Church at the upper end, the town is historically known for its wealth of shops, pubs, restaurants and sites of interest, and envied by other towns in the district. Although still an appealing area to set up for local businesses, major retailers and artisan traders, some consider that the reputation of Halstead as a place to visit has been falling away.

Feedback from the survey

78% of respondents to the survey wrote of a desire to see a larger number and a wider diversity of shops in Halstead, several expressing a preference for more brand-name shops and clothes shops, and also calling for more independent retailers with a wider range of products. 63% felt the town is not regarded as a popular place for tourism, and 78% of respondents felt the town's attractions were insufficiently publicised to attract tourists.

The survey indicated many Halstead residents feel the town would benefit from a tourist information point.



Considerations

Halstead has many shops and businesses, which successfully serve the needs of the townspeople and visitors. The recent arrivals of major stores have increased choice for consumers. The proposed residential developments in and around Halstead will further raise the incentive for new businesses to start up, and for existing shop owners to increase their customer base.

Halstead retains a lot of its character, which is enhanced by the excellent floral displays provided by the Halstead in Bloom team. This naturally heightens Halstead's appeal as a place to visit and tour.

Recommendations

- Halstead Town Council to work with the Chamber of Trade and local authorities to explore ways of drawing extra business to the town.
- To improve publicity and marketing of the town to encourage consumer activity.
- A tourist information centre to be set up in Halstead to enable visitors to orientate their exploration of the town.



Keeping people informed

Publicity

Although a majority of respondents seemed satisfied with levels of promotion in Halstead, several suggestions on how to advance awareness of local events came to light. These included calls for a free local paper, door-to-door leaflet-delivery, a central information noticeboard where individuals, as well as local government and organisations could post adverts, and an information centre on the high street. The survey revealed a level of demand for Halstead Town Council to publish a monthly newsletter or a magazine with free ads for local residents.

Those acquainted with digital methods of communication favoured the creation of a 'Living in Halstead' app which would provide information on local activities and place updates on Facebook, or a website tailored to keep residents in touch with information and events relating to their chosen interests.

A real-time digital noticeboard in the town centre (similar to those used by some bus companies to give up-to-date information on bus arrivals) was emphasised as another effective method of raising Halstead's profile locally.

Recommendations

- To set up a working group to review the current means of communication and make suggestions for improvement.



Broadband and mobile coverage

Internet and mobile coverage for the town was generally felt to be acceptable, except for a few respondents who stated that the signal was poor in some areas of the town, often dependent on the provider.

Recommendations

- Inform providers of areas where a poor signal is received.

Do you want to have your say in how your community is policed?

Independent Advisory Groups (IAGs) play an important part in ensuring that Essex Police consults with, and understands the views of, our diverse community.

The aim of the group is to review police work practices, in order to help Essex Police better understand how its processes and policies can affect our different communities.

To allow this consultation process, members are recruited to offer advice and guidance to the police, to assist and advise at times of critical incidents and provide constructive feedback around new policy developments and police recruitment.

Tell us how we are policing your communities - we want to hear from you.

Braintree District Council Offices, Gateway House, Bocking End CM8 1NB
Friday 20th April 2018 at 10:00 - 11:00 in Meeting Room 2
Monday 30th April 2018 at 19:00 - 20:00 in Committee Room 1

Internet: essex-police.uk/iag
 Email: iag@essex.pnn.police.uk
 Telephone: 0201 etc. 400301

Looking for a hall to hire?

Queen's Hall

Chipping Hill, Halstead CO9 2BY

The hall is ideal for Functions, Private Parties, Classes and Business Events

The main hall is approx 17.5m x 8m
 We offer a modern fully equipped kitchen,
 Modular stage, data projector, PA system, Free Wi-Fi,
 modern disabled toilet, car parking

For further information and rates contact Halstead Town Council
Telephone: 01787 476480, or email
reception@halsteadtowncouncil.org.uk

Halstead Town Council
 Senior Citizens' Outings
 2019

DESTINATIONS

15 May Canterbury
 12 June Sheringham
 17 July Broadstairs
 11 September Southwold
 9 October Henley on Thames

Costs for the trips are £14.00 per trip. For persons living outside Halstead the cost is £19.50 per person per trip

Booking forms are available from the Town Council offices at Queens Hall, Chipping Hill, Halstead CO9 2BY, or can be downloaded from the website

<http://www.halsteadtowncouncil.org.uk/news-and-events-2>

Action Plans

These action plans have been created to try to address the issues raised in the survey. Halstead Town Council will own the Action Plan and provide the leadership to drive the responsible authorities, making them aware of the issues raised and seeking their support to implement improvements.

This will be a live Action Plan that is reviewed and updated by the Town Council.

Key :

HTC Halstead town Council

BDC Braintree District Council

ECC Essex County Council

MP Member of Parliament

NHS National Health Service

EA Environment Agency

CT Halstead Chamber of Trade

No	Action	Priority	Who Involved
Transport and Highways			
1	Communicate the residents' desire for a bypass to Essex County Council and local MP	High	HTC, ECC, MP
2	Meet with Sudbury Town Council to seek common ground in lobbying for a bypass.	Medium	HTC
3	Seek funding to repair and restore Riverside Bridge, bring it back into use and take ownership of the bridge for the future	Medium	HTC, ECC
4	Inform residents of the Essex County Council procedures for reporting potholes, pavement issues, and other highways issues	Medium	HTC
Housing and Development			
1	HTC to continue to ensure that residents' comments are taken into account when reviewing planning applications at Council meetings	High	HTC
2	Communicate residents' views to BDC planning committee, referring where necessary to the Local Plan.	High	HTC, BDC
3	Seek boundary changes to include any developments adjoining Halstead that are outside of the town boundary.	Medium	HTC, BDC
4	Constantly monitor the BDC rolling five year housing trajectory to understand the future population growth and the impact upon the town.	Medium	HTC, BDC
Community Services			
1	Meet the Police and Crime Commissioner to seek measures to increase the police presence and support to Halstead.	High	HTC, Essex Police
2	Investigate the use of "Specials" and implement if appropriate	High	HTC
3	Meet with Elizabeth Courtauld Surgery team and NHS to press for measures to increase surgery capacity to support housing growth	High	HTC, Surgery, NHS
4	Work with H4C Trust to explore the potential provision of a new Community Centre	Medium	HTC, H4C
5	Work with local organisations and authorities with the aim of reducing anti-social behaviour	Medium	HTC

Action Plans – continued

No	Action	Priority	Who Involved
Environment, Conservation and Heritage			
1	Ensure that Halstead heritage, conservation and environment areas are preserved and respected in the planning process	High	HTC, BDC, ECC
2	Express residents' disgust concerning dog-fouling to Braintree District Council	Medium	HTC, BDC
3	Identify to Essex County Council residents' concerns on inadequate street lighting and seek resolution	Medium	HTC, ECC
4	Put forward appropriate green spaces for Local Green Space designation	High	HTC, BDC
5	Promote and maintain the cleanliness and wild life habitat of the river, consulting local bodies	Medium	HTC
Leisure and Recreation			
1	Work with Braintree District Council to deliver facility improvements to the Ramsey Road playing field site	Medium	HTC, BDC
2	Press the Environment Agency to make improvements to the aesthetic appearance of the river, particularly along the Causeway	High	HTC, EA
3	Monitor the implementation of the Open Spaces Action Plan	Medium	HTC
Education and Young people			
1	Monitor availability of school places to support the increasing population	Medium	HTC, ECC
2	Work with front line youth services to assist in providing improved facilities for the youth of the town	Medium	HTC, ECC, BDC, NHS
3	Work with local groups and organisations and to promote activities for young children	Medium	HTC
Local Economy and Tourism			
1	Press Braintree District Council to deliver an appropriate town centre regeneration plan	Medium	HTC, BDC
2	Promote and support initiatives for improving tourism	Medium	HTC, BDC, CT
3	Work with BDC to understand their plans to support business development	Medium	HTC, BDC
Public information and communication			
1	Review the current means of communication council information and town events and make recommendations for improvement	Medium	HTC
2	Encourage residents to engage with the council	Medium	HTC



Acknowledgements

This plan has been prepared by the members of Halstead Town Council :

Councillor A Munday – Chairman
 Councillor M Radley – Vice Chairman
 Councillor Mrs J Allen
 Councillor Mrs S Dingle
 Councillor Mrs S A Diver
 Councillor C Fox
 Councillor D Gronland
 Councillor D Hume
 Councillor Mrs J A Pell
 Councillor Mrs E Penn
 Councillor Mrs J Sutton
 Councillor G Warren

Supported by officers of the Town Council.

Halstead Town Council is grateful to:

Jan Stobart, RCCE – for support and guidance.
 Braintree District Council for providing a grant of £750 for administration costs.
 Essex County Council for providing a grant of £1,500 for administration costs.
 Halstead and District Local History Society for historic photos of Halstead.
 Adrian Corder-Birch for “Brief History of the Essex Town of Halstead”.
 Halstead in Bloom for various photos.
 Top to Bottom cleaning for donating a £50 draw prize for the survey.
 Ollie Gronland for his advice on style and presentation.
 Mike Plowright and the Level 3 Graphic Design and Photography students at Colchester Institute for graphic design and photos.



